

**vtech**<sup>®</sup>

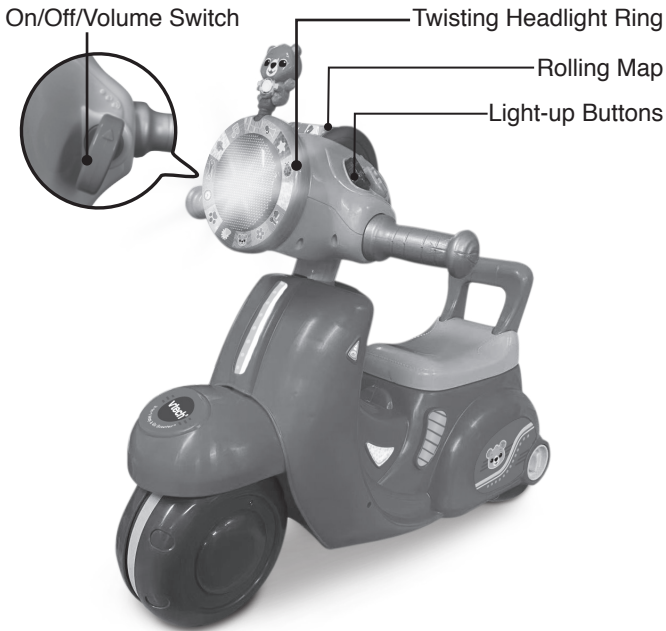
# Instruction Manual

## 2-in-1 Map & Go Scooter™

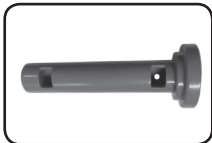


# INTRODUCTION

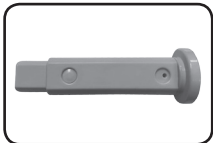
Thank you for purchasing the **2-in-1 Map & Go Scooter™**! Ride through playtime with the scooter that grows with tiny travelers starting as a three-wheeled trike, then transforming into a two-wheeled scooter. Explore locations on the map, twist the headlight ring and add in traffic and road safety phrases to make the journey as delightful as the destination!



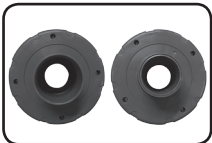
# INCLUDED IN THE PACKAGE



Short Axel



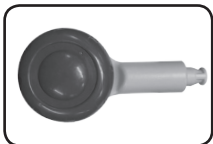
Long Axel



Two Back Wheels



Seat Back Handle



Front Wheel



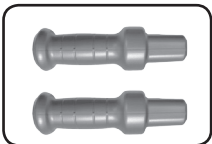
Front Wheel Cover



Driving Panel



Four Screws



Two Handlebars



Scooter Body



Driving Panel  
Support Post



Label Sheet

- Quick Start Guide

## WARNING

All packing materials such as tape, plastic sheets, packaging locks, removable tags, cable ties, cords and packaging screws are not part of this toy, and should be discarded for your child's safety.

## NOTE

Please save this Instruction Manual as it contains important information.

## ATTENTION

Pour la sécurité de votre enfant, débarrassez-vous de tous les produits d'emballage tels que rubans adhésifs, feuilles de plastique, attaches, étiquettes, cordons et vis d'emballage. Ils ne font pas partie du jouet.

## NOTE

Il est conseillé de sauvegarder ce manuel d'utilisation car il comporte des informations importantes.

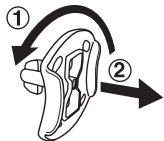
## CAUTION:

Adult assembly required. This package contains small parts. For your child's safety, do not let your child play with the toy until it is fully assembled.

## ATTENTION :

Ce jouet contient des petites pièces. Ce jouet doit être assemblé par un adulte. Pour la sécurité de votre enfant, ne pas le laisser jouer avec le jouet tant que ce dernier n'est pas complètement assemblé par un adulte.

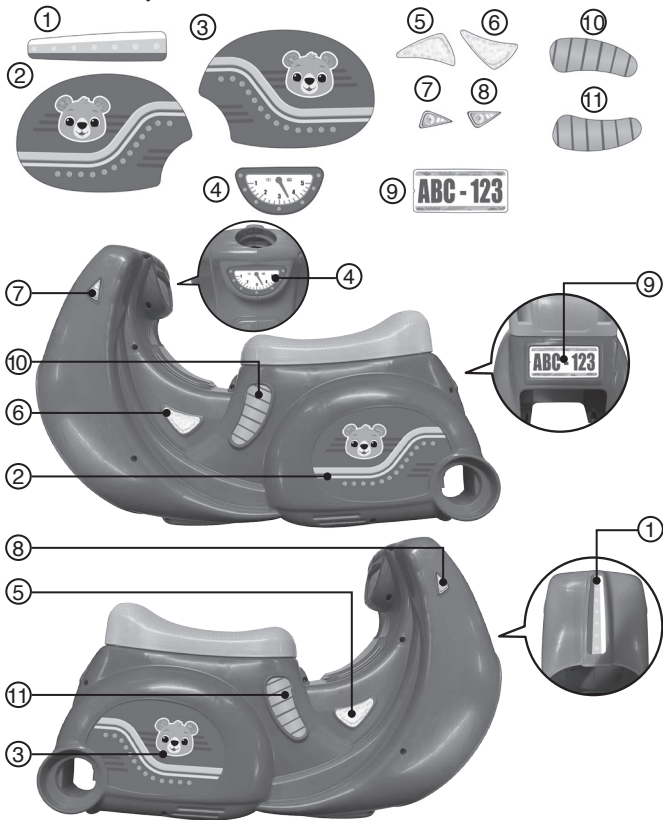
## Unlock the Packaging Locks



- ① Rotate the packaging locks counterclockwise 90 degrees.
- ② Pull out the packaging locks and discard.

# LABEL APPLICATION

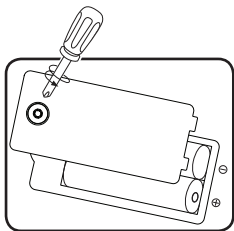
Please securely stick the labels to the scooter as indicated below:



# GETTING STARTED

## Battery Removal and Installation

1. Make sure the unit is turned **Off**.
2. Find the battery cover located on the back of the **Driving Panel**, use a screwdriver to loosen the screw and then open the battery cover.
3. Remove old batteries by pulling up on one end of each battery.
4. Install 2 new AA (AM-3/LR6) batteries following the diagram inside the battery box. (For best performance, alkaline batteries or fully charged Ni-MH rechargeable batteries are recommended.)
5. Replace the battery cover and tighten the screw to secure.



### WARNING:

Adult assembly required for battery installation.  
Keep batteries out of reach of children.



### ATTENTION :

Les piles ou accumulateurs doivent être installés par un adulte.  
Tenir les piles ou accumulateurs hors de portée des enfants.

## IMPORTANT: BATTERY INFORMATION

- Insert batteries with the correct polarity (+ and -).
- Do not mix old and new batteries.
- Do not mix alkaline, standard (carbon-zinc) or rechargeable batteries.
- Only batteries of the same or equivalent type as recommended are to be used.
- Do not short-circuit the supply terminals.
- Remove batteries during long periods of non-use.
- Remove exhausted batteries from the toy.
- Dispose of batteries safely. Do not dispose of batteries in fire.

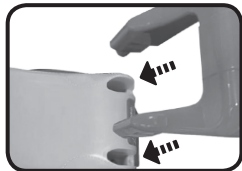
## RECHARGEABLE BATTERIES:

- Remove rechargeable batteries (if removable) from toy before charging.
- Rechargeable batteries are only to be charged under adult supervision.
- Do not charge non-rechargeable batteries.

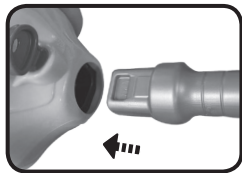
## ASSEMBLY INSTRUCTIONS

With the **2-in-1 Map & Go Scooter™** safety comes first. To ensure your child's safety, adult assembly is required. For your child's safety, do not let your child play with the toy until it is fully assembled.

1. Insert the **Seat Back Handle** into the slots on the back of the **Seat**. Press down on the **Handle** until you hear it snap into place.



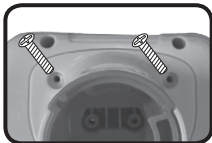
2. Insert the **Handlebars** into either side of the **Driving Panel**. Push until you hear the **Handlebars** snap into place.



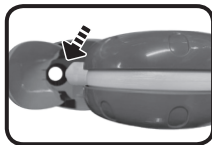
3. Insert the **Front Wheel Cover** into the front of the **Scooter Body**. Press until you hear the **Front Wheel Cover Tabs** snap into place.



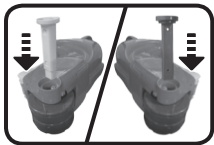
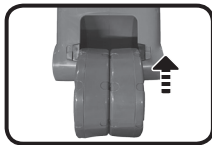
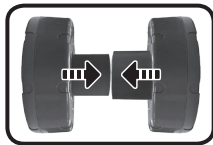
4. Attach the **Driving Panel Support Post** to the bottom of the **Driving Panel**, securing the pieces together with the four **Small Screws**.



5. Insert the **Front Wheel** into the bottom of the **Scooter Body**. Push until you hear the **Front Wheel** snap into place.

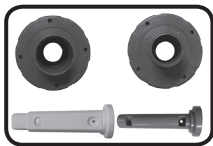
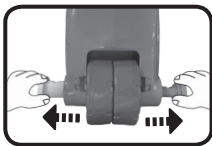


6. To assemble the **Back Wheels** in the **Scooter** position, push the two **Back Wheels** together. Shorten the **Long Axle** by pressing the rounded end toward the squared off end, then place the **Wheels** between the two **Wheel Supports** on the **Scooter**. Slide the **Short Axle** and the **Long Axle** through the corresponding sized holes on the **Scooter** until you hear the two axles snap together. Ensure the wheels are secured properly before using the **Scooter**.

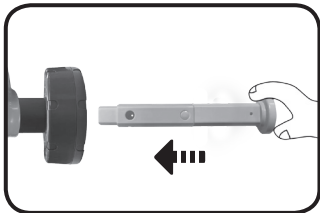
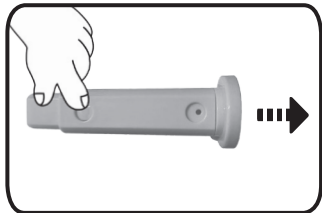
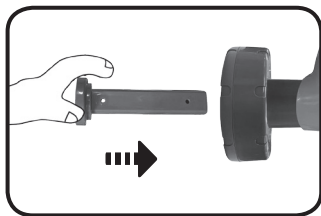




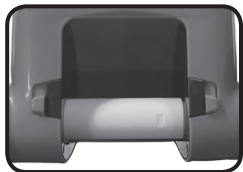
7. To remove the **Back Wheels**, slide and hold the **Wheel Lock** while pulling out the **Small Axel**. Next, slide and hold the **Wheel Lock** and pull out the **Long Axel**, then remove and separate the two **Wheels**.



8. To assemble the **Back Wheels** in the **Tricycle** position, slide the **Short Axel** through the outside of one of the **Wheels**, then through the corresponding hole in one of the **Scooter's Wheel Supports**. Next, press the button on the **Long Axel** and pull to extend the axel. Slide the **Long Axel** through the other **Wheel**. Insert the protruding end of this axel through the hole of the other **Wheel Support**. Push until it slides into the **Short Axel** and you hear the two snap together.



9. Please check the **Wheel Locks** before using the scooter. The **Wheel Locks** will spring into the locked position when the **Wheel Axels** are properly installed.



## PRODUCT FEATURES

### 1. On/Off/Volume Switch

To turn the unit **On**, turn the **On/Off/Volume Switch** to the Low volume (🔊) or High volume (🔊🔊) position. You will hear a sound, a phrase and a song. To turn the unit **Off**, turn the **On/Off/Volume Switch** to the **Off** (●) position.



### 2. Automatic Shut-Off

To preserve battery life, the **2-in-1 Map & Go Scooter™** will automatically shut down after approximately 45 seconds without input. The unit can be turned **On** again by pressing any button, twisting the **Ring** or turning the **Map**.

## NOTE

If the unit powers down or if the light fades out during play, please install a new set of batteries.

## ACTIVITIES

### 1. Light-up Buttons

Press the **Light-up Buttons** to hear playful music, fun phrases about colors, traffic lights, counting and fun sounds. The lights will flash with the sound.



## 2. Rolling Map

Turn the **Rolling Map** to one of the four positions to identify the locations through fun phrases and sounds associated with the locations. The lights will flash with the sound.



## 3. Twisting Headlight Ring

Turn the **Twisting Headlight Ring** to hear a variety of fun sounds. The lights will flash with the sound.



## 4. Motion Sensor

Roll the  **Scooter** to activate the **Motion Sensor** and hear playful driving sounds. The lights will flash with the sound.



# MELODIES

1. Bicycle Built for Two
2. Did You Ever See a Lassie?
3. On Top of Old Smokey
4. Aiken Drum
5. A-Ticket, A-Tasket
6. The Wheels on the Bus
7. Pussy Cat, Pussy Cat
8. Jack Be Nimble
9. London Bridge
10. Boys and Girls Go Out to Play
11. Hey, Diddle Diddle

12. Skip to My Lou
13. Do You Know the Muffin Man?
14. Here We Go Round the Mulberry Bush
15. While Strolling Through the Park
16. The Alphabet Song

## **SONG LYRICS**

### **Song 1**

Are you ready? Are you ready?

Time to ride, time to ride.

Don't forget your helmet, hold on to the handles.

One, two, three, off we go!

### **Song 2**

When we're riding on the road,

The traffic lights tell us what to do.

When the light turns red, it's time to stop.

### **Song 3**

Rollin', rollin' down the road.

We pass the forest and zoom by the beach,

Then drive through the city, on our way home!

## **CARE & MAINTENANCE**

1. Keep the unit clean by wiping it with a slightly damp cloth.
2. Keep the unit out of direct sunlight and away from any direct heat sources.
3. Remove the batteries if the unit will not be in use for an extended period of time.
4. Do not drop the unit on hard surfaces and do not expose the unit to moisture or water.

# TROUBLESHOOTING

If for some reason the unit stops working or malfunctions, please follow these steps:

1. Turn the unit **Off**.
2. Interrupt the power supply by removing the batteries.
3. Let the unit stand for a few minutes, then replace the batteries.
4. Turn the unit **On**. The unit should now be ready to use again.
5. If the unit still does not work, install a new set of batteries.

## IMPORTANT NOTE

If the problem persists, please contact our **Consumer Services Department** at **1-800-521-2010** in the U.S. or **1-877-352-8697** in Canada, or by going to our website at **vtechkids.com** and filling out our **Contact Us** form located under the **Customer Support** link. Creating and developing VTech products is accompanied by a responsibility that we take very seriously. We make every effort to ensure the accuracy of the information, which forms the value of our products. However, errors sometimes can occur. It is important for you to know that we stand behind our products and encourage you to contact us with any problems and/or suggestions that you might have. A service representative will be happy to help you.

## NOTE

This equipment has been tested and found to comply with the limits for a Class B digital device, pursuant to Part 15 of the FCC Rules. These limits are designed to provide reasonable protection against harmful interference in a residential installation. This equipment generates, uses and can radiate radio frequency energy and, if not installed and used in accordance with the instructions, may cause harmful interference to radio communications. However, there is no guarantee that interference will not occur in a particular installation. If this equipment does cause harmful interference to radio or television reception, which can be determined by turning the equipment off and on, the user is encouraged to try to correct the interference by one or more of the following measures:

- Reorient or relocate the receiving antenna.
- Increase the separation between the equipment and receiver.
- Connect the equipment into an outlet on a circuit different from that to which the receiver is connected.
- Consult the dealer or an experienced radio/TV technician for help.

### **CAUTION**

Changes or modifications not expressly approved by the party responsible for compliance could void the user's authority to operate the equipment.

#### **Supplier's Declaration of Conformity**

47 CFR § 2.1077 Compliance Information

Trade Name:	VTech®
Model:	5723
Product Name:	2-in-1 Map & Go Scooter™
Responsible Party:	VTech Electronics North America, L.L.C.
Address:	1156 W. Shure Drive, Suite 200 Arlington Heights, IL 60004
Website:	vtechkids.com

THIS DEVICE COMPLIES WITH PART 15 OF THE FCC RULES. OPERATION IS SUBJECT TO THE FOLLOWING TWO CONDITIONS: (1) THIS DEVICE MAY NOT CAUSE HARMFUL INTERFERENCE, AND (2) THIS DEVICE MUST ACCEPT ANY INTERFERENCE RECEIVED, INCLUDING INTERFERENCE THAT MAY CAUSE UNDESIRE OPERATION.  
CAN ICES-003(B)/NMB-003(B)

**Visit our website for more  
information about our products,  
downloads, resources and more.**

***vtechkids.com***  
***vtechkids.ca***

Read our complete warranty policy online at  
***vtechkids.com/warranty***  
***vtechkids.ca/warranty***

